



# i-Tree Academy

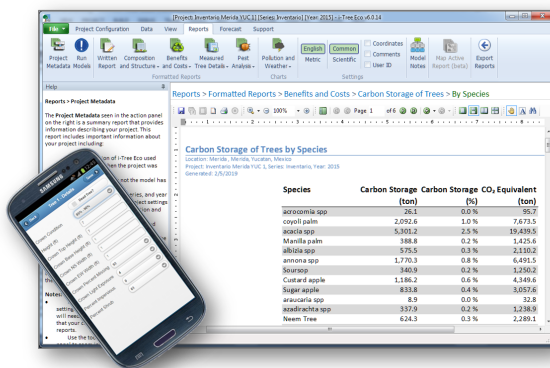
Online Training

March 3rd – June 2nd, 2021

ReGreenSpringfield



The US Forest Service, Davey Institute and ReGreen Springfield are offering the on-line i-Tree Academy training, designed to introduce the i-Tree suite of tools to a class of 45 participants from across the U.S. The Academy instruction will be delivered by experienced members of the i-Tree project team, focused on helping users learn key i-Tree applications that can be used to inventory, assess, and report on the value of urban forests and greenspace.



*Learn i-Tree Eco desktop and mobile data collection*

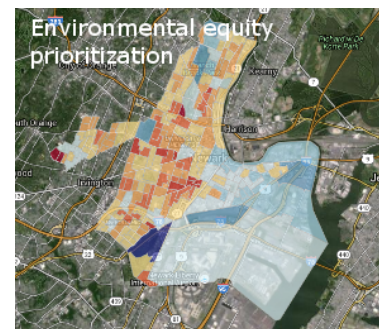
## Program Learning Objectives

The program goal is to develop a cadre of individuals who can use i-Tree to complete community projects or conduct training for others.

- Learn how to use several core online i-Tree assessment tools including Design, Canopy, and Landscape
- Develop an understanding of the i-Tree Eco field-based assessment application options and project phases
- Improve i-Tree project planning, tool selection, decision-making, and advocacy competency
- Understand advantages and limitations of i-Tree
- Apply new learning by designing and completing a required community i-Tree assessment project
- See examples of past Academy capstone projects: <https://www.itreetools.org/support/about-i-tree-academy>

## Program Details

The course will take place over four months, consisting of seven two-hour online sessions using the Zoom platform. Sessions are every other Wednesday, 12:00 to 2:00 PM Eastern time. Participants will complete assignments related to the session topics and develop and complete a final project. Participants will need an internet connection, web browser, speakers, and microphone.



*Learn how to prioritize tree planting with i-Tree Landscape*

## Cost, Application & Registration

Visit <http://www.unri.org/itreeacademy> for an application form, registration details, and limited need-based scholarship information.

Registration is limited to 45 participants living in US States and US Territories. To allow students from across the country to attend, we are initially limiting registration to 2 per state and 1 per community. Registration fee is \$175. The Fee is due by February 19, 2021.

## i-Tree Academy 2021 Program Outline



### Session 1 - Wed, Mar 3 - Course Introduction

- Course learning objectives, format, student project requirement, and instructors.
- i-Tree introduction, key concepts, website, and resources
- Navigating the Litmos learning management system

### Session 2 - Wed, Mar 17 - i-Tree Design, MyTree and Planting

- Online tools for assessing trees, tree planting projects, and more
- Understanding online tool estimates, differences, and limitations
- Explore tool uses for engagement, education, and adding value to projects

### Session 3 - Wed, Mar 31 - Aerial Applications: i-Tree Landscape and County

- Explore spatial relationships between tree canopy and human populations
- Optimize tree planting and preservation efforts
- Quickly generate ecosystem service estimates and reports with i-Tree County

### Session 4 – Wed, Apr 14 - i-Tree Canopy & i-Tree Eco Introduction

- Estimate canopy and other cover types using i-Tree Canopy
- Explore options to estimate canopy change using Google historical images
- Introduce Eco field-based assessment model framework, advantages & limitations

### Session 5 - Wed, Apr 28 - Eco project phases, options, reports, and more

- Eco project configuration and data collection for complete & sample projects
- Flexible import system overview
- Exploring Eco project reports, data exporting, and mapping options

### Session 6 - Wed, May 12 - Scenario-based learning: Putting i-Tree to work

- Apply multiple i-Tree applications and options to address real-world challenges
- Gain understanding of how to effectively use Eco for common municipal uses
- Explore the relationship between trees and socioeconomic issues
- Course project discussion and framework for presentations

### Session 7 - Wed, June 2 - Student project presentations and review

- Participant project presentations and action plan progress
- Team and guest review and feedback
- Course wrap up and US Forest Service reporting



#### For more information

Please visit [www.unri.org/itreeacademy](http://www.unri.org/itreeacademy) for details and registration information, or contact: Donna Foster, US Forest Service, Morgantown, WV; [donna.m.foster@usda.gov](mailto:donna.m.foster@usda.gov) or Dave Bloniarz, US Forest Service, Amherst, MA; [david.bloniarz@usda.gov](mailto:david.bloniarz@usda.gov)

